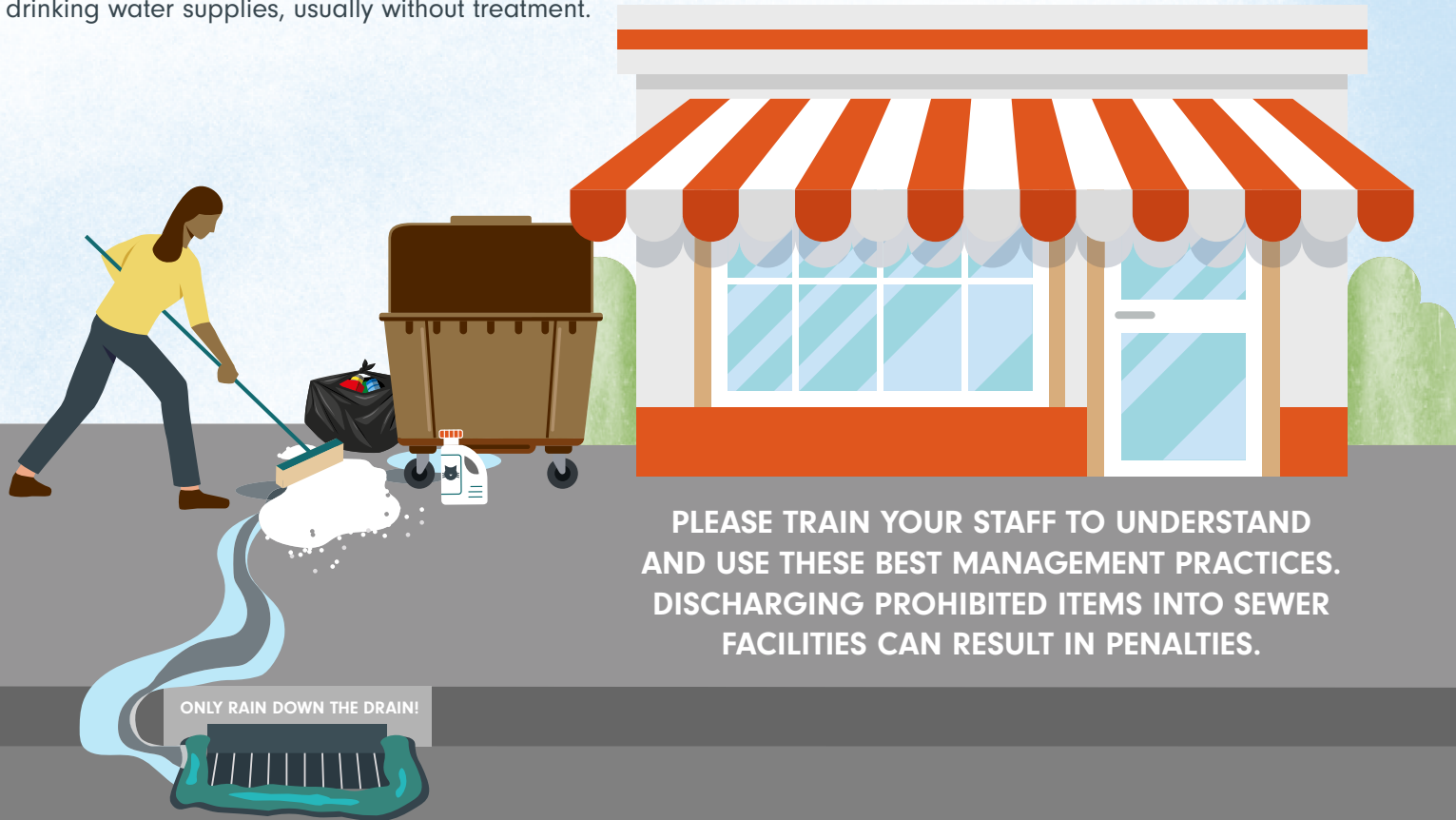




# STEPS FOR FOOD SERVICE BUSINESS

## PROTECT YOUR BUSINESS AND CLEAN WATER

Anything spilled onto outside surfaces or hosed into the gutter eventually enters our streams and rivers via storm drains. Unlike sanitary sewers (sinks, toilets, etc.) that go to the wastewater treatment plant, storm drains flow directly to streams or rivers or into the ground towards our underground drinking water supplies, usually without treatment.



PLEASE TRAIN YOUR STAFF TO UNDERSTAND AND USE THESE BEST MANAGEMENT PRACTICES. DISCHARGING PROHIBITED ITEMS INTO SEWER FACILITIES CAN RESULT IN PENALTIES.

### BEST MANAGEMENT PRACTICES

#### WASTE MANAGEMENT

- Provide adequate leak-proof waste receptacles and keep dumpster lids closed. Should leaks be noticed, contact the receptacle provider for a properly sealed receptacle.
- Clean outside waste storage and parking areas by first sweeping up debris and trash. If water or cleansers are needed, spot mop the area. Use absorbent pads or other disposable material to soak up oil and soaps then dispose of as solid waste. Dispose of wash water into the sanitary sewer (e.g. mop sink).





## WASHING AND CLEANING

- Discharge all wash waters to the sanitary sewer, never an outdoor or storm drain. If it contains grease, oil, or fats (e.g. exhaust hoods, dish washing wastewater), it must be sent through a grease trap first.
- Wash mats and other equipment indoors and put wash water into the kitchen \*floor drain or use interior kitchen sinks or dishwashers. If you do not have a mop sink or floor drain, take the mats to a coin-operated car wash that uses an oil-water separator (after you obtain permission from the car wash owner).
- Ensure any contracts with a mobile cleaning company include agreements for proper cleaning, collection, and disposal of all wash water and grease waste.

## LANDSCAPING

- Make sure landscaping maintenance activities don't blow, sweep, or wash dirt and debris into the street or storm drain system. Use dry sweeping and collection methods; prevent overspray and erosion.

\*Please verify that the floor drain is connected to the sanitary sewer system.

## GREASE MANAGEMENT

- Collect any bulk grease or waste /used oil in secure, tip-resistant, leak-proof containers, and contract a company to haul away or recycle. Look under "grease traps and service" in your phone directory or online. Keep grease storage areas clean.
- Never put fats, grease, or oil down the storm drain or sanitary sewer. Disposing of grease directly into the sanitary sewer or storm water system is prohibited and results in clogged pipes and facilities.



Too much buildup can cause system failure.

## PEST CONTROL

Control pests using less toxic pest management methods and appropriate timing of use.

- Do not spray in windy conditions.
- Follow label instructions.
- Sweep up; properly dispose of excess chemicals.

